

FENDER FLARE INSTALLATION INSTRUCTION

TOYOTA TACOMA 12-15, Regular/Access/Double Cab, Long Bed

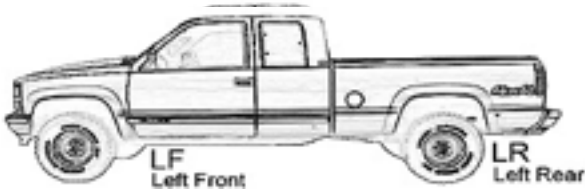
Item No. FLZ209909 (Rivetz Style)

Parts

Qty (1) Fender Flare Left Front & Bumper Piece(LF)
 Qty (1) Fender Flare Left Rear (LR)
 Qty (1) Fender Flare Right Front & Bumper Piece (RF)
 Qty (1) Fender Flare Right Rear (RR)
 Qty (1) Rubber Seal (enough for four flare outer edge)
 Qty (42) Allen Bolt & Nuts (Hex Key or Torx Bit equired)
 Qty (4) Machine Screw & S-Clips

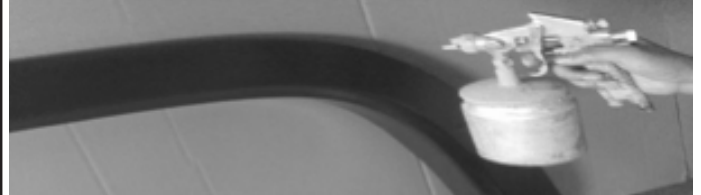
Qty (4) Hex Screw & Nuts
 Qty (28) Small Washers
 Qty (2) 6.5 and 19mm Spacer (ea)
 Qty (4) 50mm Truss Screws
 Qty (26) 20mm Truss Screws
 Qty (4) Socket Screws
 Qty (8) Self Tapping Screws (Optional B)

Step 1. Pre-Installation



Pre-fit and ensure both left (driver) side & right (passenger) side fender flare to the vehicle before painting or installation. You may remove any moldings, strips or existing flares from the vehicle for fitting and installation.

Step 2. Painting (optional)



Hire a professional painter or body shop and follow the paint manufacturer specifications to paint the flares. Clean all fender flare surface with clean water & a mild detergent before paint, don't use lacquer thinner or any solvent based product.

Step 3. Cleaning



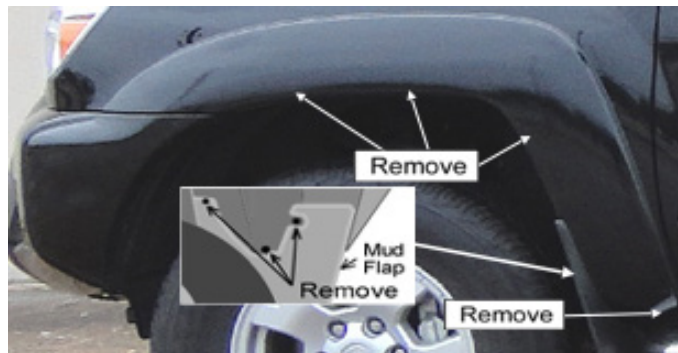
Wash and wipe dry the areas of contact on the vehicle body. Clean the surface and inside edge of the fender flare where the rubber seal is to be attached.

Step 4. Apply Rubber Seal



Remove 1 inch tape liner from rubber seal, apply it on the flare, start one end & along the edge that comes in contact with body panel.
Caution: 3M tape will stick on the inside of the flare. Make sure the rubber seal along the edge well, and rip the tape liner off gradually, apply pressure on the tape in the same time to ensure that it adheres well. Trim excess rubber seal and so on.

Step 5. Installation (Left Front Flare Shown)



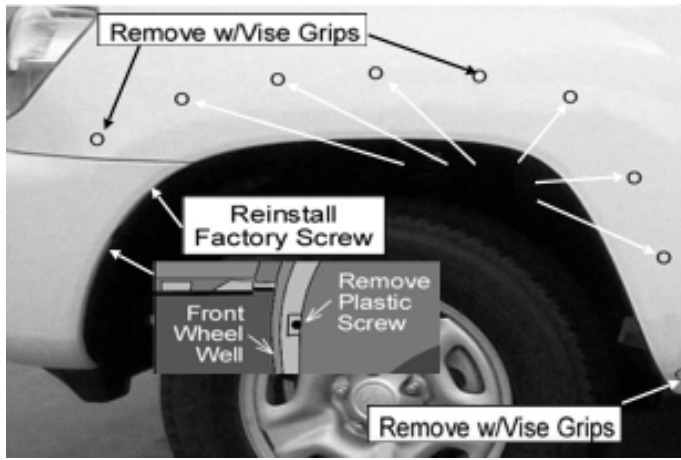
Remove 3 existing screws from the mud flap, save screws for reinstallation. **(see illustration)** Remove 3 factory screws on the top of the flare lip & 1 screw from the bottom as shown, save screws for reinstallation. Pull away the factory flare (large part) from the vehicle.

Step 6. Installation (Left Front Flare Shown)



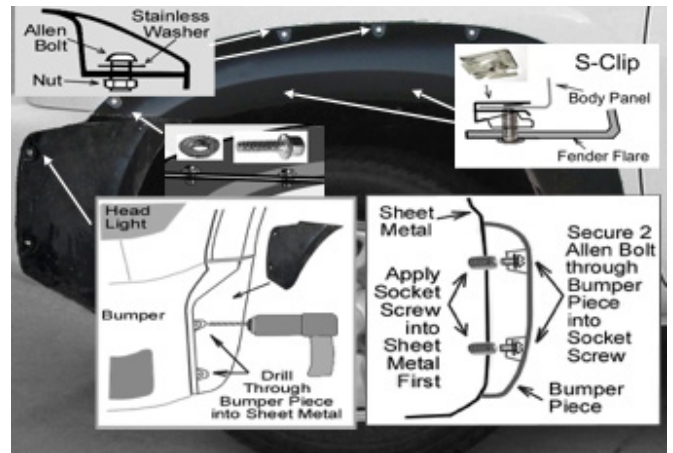
Remove 2 factory screws from the underneath of the factory bumper cover, pull down the bumper cover and splash shield, as bottom right illustration, save screws for reinstallation. Remove 7 factory plastic clips from the inside of the factory bumper cover, as top right illustration. Pull away the factory flare (bumper piece/small part) from vehicle.

7. Installation (Left Front Shown)



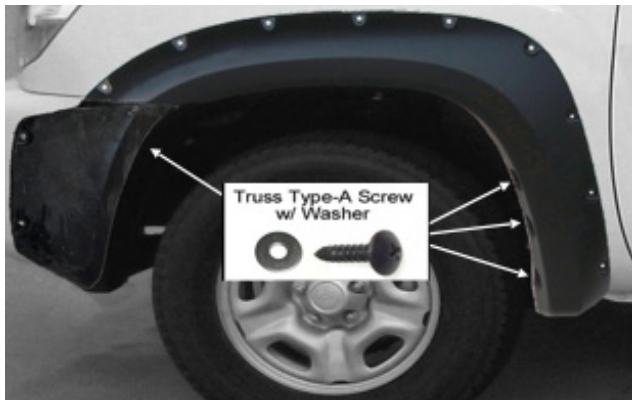
Remove 6 factory clips by hand on the fender. Remove 3 factory clip with vise grips on the fender, as shown. Remove factory plastic screw on the front of wheel well, use screwdriver and prying out. (see bottom illustration)

8. Installation (Left Front Shown)



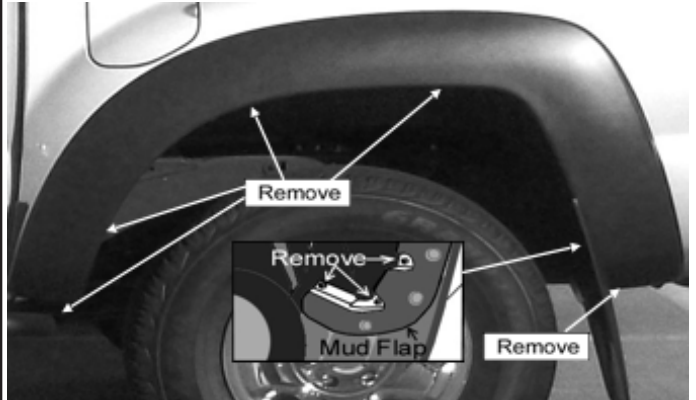
Use hex key to tight allen bolt & nut firmly on every pocket of the fender flare, shown as top. **DO NOT OVER TIGHTEN!** Connect front flare & bumper piece together with 2 hex screws & nuts, shown in top left illustration. Hold the flare firmly on the fender with right position, **ensure the flare and bumper piece lines up.** Mark 2 clip locations through the existing holes on the flare. **Do not remove the flare and bumper piece,** drill two holes through the pocket holes on the bumper piece into metal sheet. Remove the flare, and apply 2 socket screws into the holes on the metal sheet, shown in bottom right illustration. Apply 2 S-Clip over 2 marks, and place the flare on the vehicle. Secure 2 machine screws into the S-Clip. Secure 2 allen bolts through bumper piece into socket screw.

9. Installation (Left Rear Flare Shown)



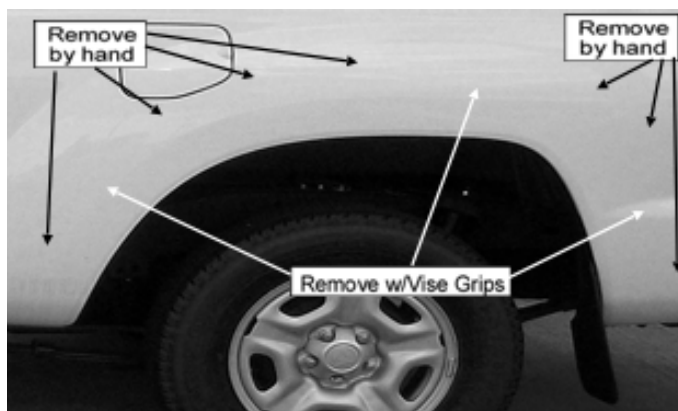
Install 4 supplied truss screws (20mm) into factory holes. (see illustration) Use included self tapping screws for extra secure on the bumper piece. Tighten all screws.

10. Installation (Left Rear Shown)



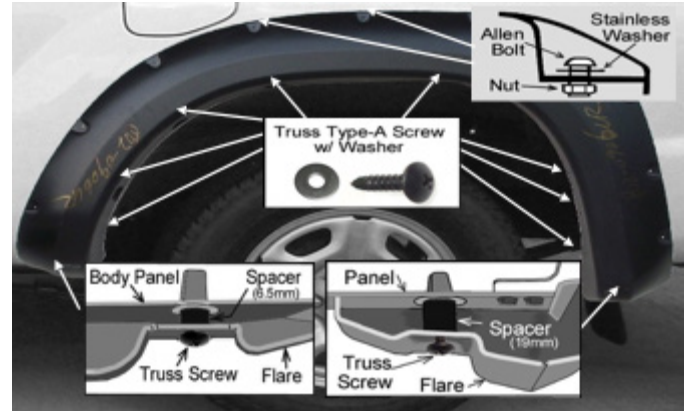
Remove 3 existing screws from the mud flap, save screws for reinstallation and discard mud flap. (see illustration) Remove 5 factory screws as shown. Pull away the factory flare from the vehicle.

11. Installation (Left Rear Flare Shown)



Remove 7 factory clips by hand on the fender. Remove 3 factory clips with vise grips on the fender, as shown.

12. Installation (Left Rear Shown)



Use hex key to tight allen bolt & nut firmly on every pocket of the fender flare, shown as top. **DO NOT OVER TIGHTEN!** Install 8 supplied truss screw (20mm) into factory holes. (see illustration) Install supplied truss screw (20mm) through spacer (6.5mm) into factory hole on the bottom of front end, as left shown. Install supplied truss screw (50mm) through spacer (19mm) into factory hole on the bottom of rear end, as right shown.

Optional B: The included self tapping screw may be used for extra secure if needed.