

## FENDER FLARE INSTALLATION INSTRUCTION

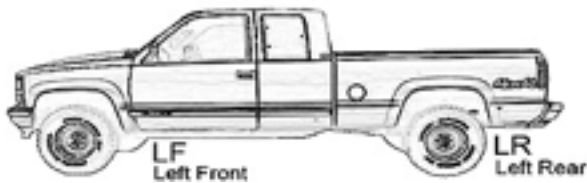
GMC SIERRA 2500/3500 15-UP 78.7", 97.6" LONG BED

Item No. FLZ209123 (Rivetz Style)

- Qty (1) Fender Flare Left Front (LF)
- Qty (1) Fender Flare Left Rear (LR)
- Qty (1) Fender Flare Right Front (RF)
- Qty (1) Fender Flare Right Rear (RR)
- Qty (1) Rubber Seal (enough for four flares's outer edge)

- Parts**
- Qty (8) Flange Type-A Screw
  - Qty (14) Truss Type-A Screw & Washer
  - Qty (40) Allen Bolt & Nut (Torx Bit required)
  - Qty (8) Self Tapping Screw(see optional B)

### Step 1. Pre-Installation



Prefit and ensure both left (driver) side & right (passenger) side fender flare to the vehicle before painting or installation. You may remove any moldings, strips or existing flares from the vehicle for fitting and installation.

### Step 2. Painting (optional)



Hire a professional painter or body shop and follow the paint manufacturer specifications to paint the flares. Clean all fender flare surface with clean water & a mild detergent before paint, don't use lacquer thinner or any solvent based product.

### Step 3. Cleaning



Wash and wipe dry the areas of contact on the vehicle body. Clean the surface and inside edge of the fender flare where the rubber seal is to be attached.

### Step 4. Apply Rubber Seal



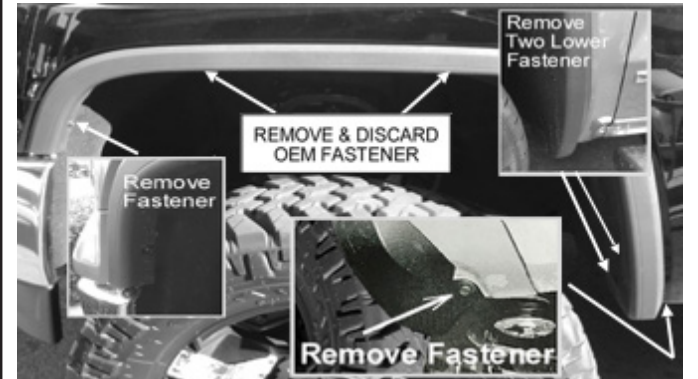
Remove 1 inch tape liner from rubber seal, apply it on the flare, start at one end & along the edge that comes in contact with body panel. Caution: **3M tape will stick on the inside of the flare.** Make sure the rubber seal along the edge well, and rip the tape liner off gradually, apply pressure on the tape to ensure that it adheres well. Trim excess rubber seal and so on.

### Step 5. Installation (Left Front Flare Shown)



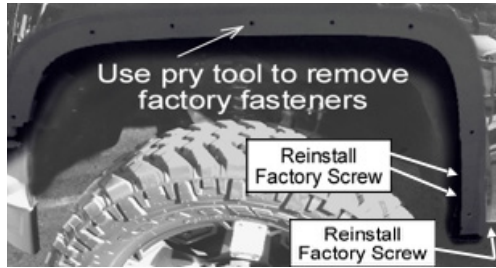
Make sure the front tire has been turned outward for easy installation. **FOR MODELS WITH FACTORY MUDFLAP:** Remove 5 mud flap fasteners with T-30, T-15 torx bit & screw driver. Save the upper two fasteners for re-install in step 7.

### Step 6. Installation (Left Rear Flare Shown)



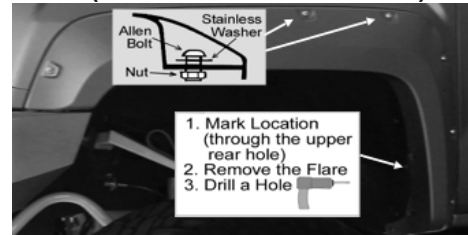
Use a 9/32" or 7mm socket to remove the fastener on the front of factory wheel arch molding.(left shown) Use a T-15 Torx Bit to remove two lower fastener on the rear of factory wheel arch molding. (right top shown) Use a 1/2" socket to remove fastener from the rear underside of factory wheel arch molding. Save and reinstallation. Use a T-15 Torx Bit to remove two fastener along the top of the factory wheel arch molding.(center top shown)

### 7. Installation (Left Front Flare Shown)



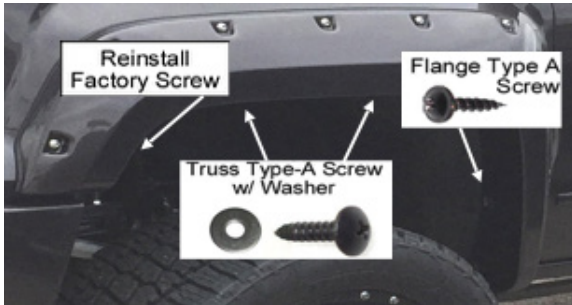
Pull the lower grip part to remove the factory flare from vehicle. Use pry tool to remove any remaining factory fasteners. **FOR MODELS WITH FACTORY MUDFLAP:** Re-install the upper two fasteners (removed in step 5-2). Use a 1/2" socket to re-install fastener (removed in step 6-3) from the rear underside of factory wheel arch molding.

### 8. Installation (Left Front Flare Shown)



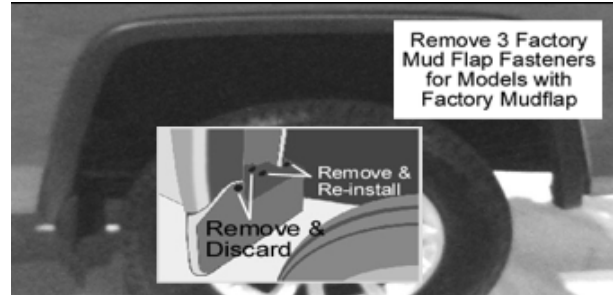
Use Torx Bit to tighten the allen bolt & nylon nut firmly on every pocket of the fender flares. **DO NOT OVER TIGHTEN!** Hold the flare firmly on the fender, to confirm the right position. **FOR MODELS WITHOUT FACTORY MUDFLAP:** Make sure other holes are on the position, use a grease pencil to mark a hole through the upper rear hole on the flare, as shown. Remove the flare. Drill a hole on the marked location through wheel well liner and sheet metal with a 3/32" drill bit.

### 9. Installation (Left Front Flare Shown)



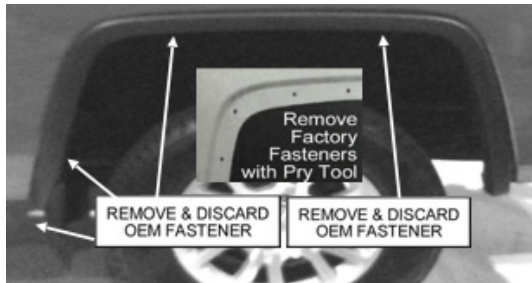
Install 4 supplied truss type A screws into the factory holes. Re-install the factory screw, removed in step 6-1. Install 1 supplied flange type A screw into the drilled hole.

### 10. Installation (Left Rear Flare Shown)



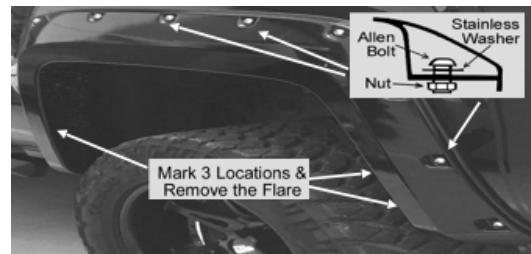
Remove 4 factory screws from the factory wheel well piece & remove. Re-install 2 factory screws into wheel well liner, as left shown. **FOR MODELS WITH FACTORY MUDFLAP:** Remove 3 mud flap fasteners with screw driver.

### 11. Installation (Left Rear Flare Shown)



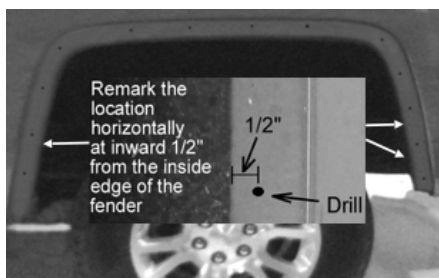
Use a 10mm socket to remove the lower 2 screws. Use T-15 torx bit to remove the others 3 fastener. Use pry tool to remove any remaining factory fasteners. Pull the lower grip part to remove the factory flare from vehicle.

### 12. Installation (Left Rear Flare Shown)



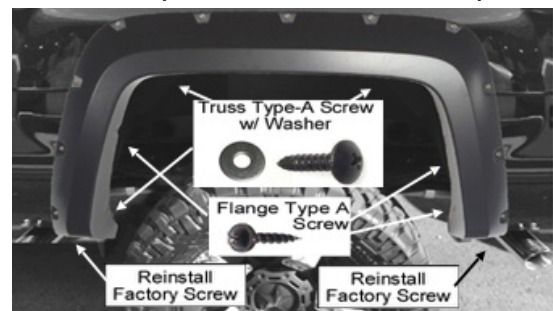
Use Torx Bit to tighten the allen bolt & nylon nut firmly on every pocket of the fender flares. **DO NOT OVER TIGHTEN!** Hold the flare firmly on the fender, to confirm the right position. Make sure other holes are in position, use a grease pencil to mark 3 holes through the holes on the flare, as shown. Remove the flare.

### 13. Installation (Left Rear Flare Shown)



Remark the 3 locations (marked in step 12) horizontally inward 1/2" from the inside edge of the fender. Drill a hole on the marked locations through sheet metal with a 3/32" drill bit. (use a floor jack on the rear hitch to raise the truck bed for easier drilling)

### 14. Installation (Left Rear Flare Shown)



Install 3 supplied truss type A screws into the factory holes. Re-install the 2 factory screws underside, removed in step 11. Install 3 supplied flange type A screws into the holes drilled in step 13.

**Option B:** The included self tapping screw may be used for extra secure if needed.